

MAGIQ Breast

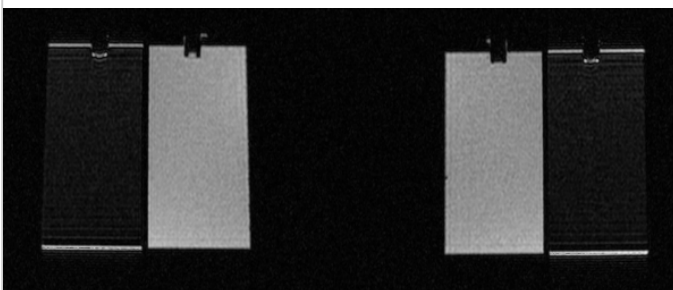
MRI Phantoms

Features

- A set of two phantoms (one for each breast well)
- Each phantom has two separately filled chambers
- Sized to fit breast coils

Benefits

- Quantitative measurement of SNR of the water signal from each phantom
- Fat fraction using a combination of the water and fat only images in the fat chambers when using 'Dixon' fat separation techniques, or a ratio of T1 and T1 fat-sat to assess fat suppression
- Simple to use
- Easy set up, requiring only locally available pads to stabilise in breast well



water (inner side)
fat (outer side)

